

Double-Ended Shear Beam Load Cell

FEATURES

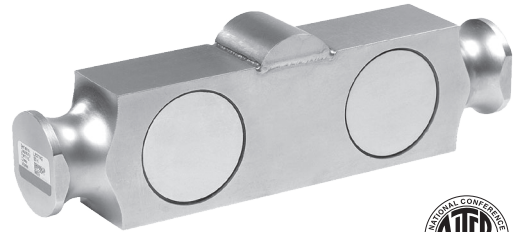
- Capacities: 50k to 100k lbs
- Stainless steel construction

APPLICATIONS

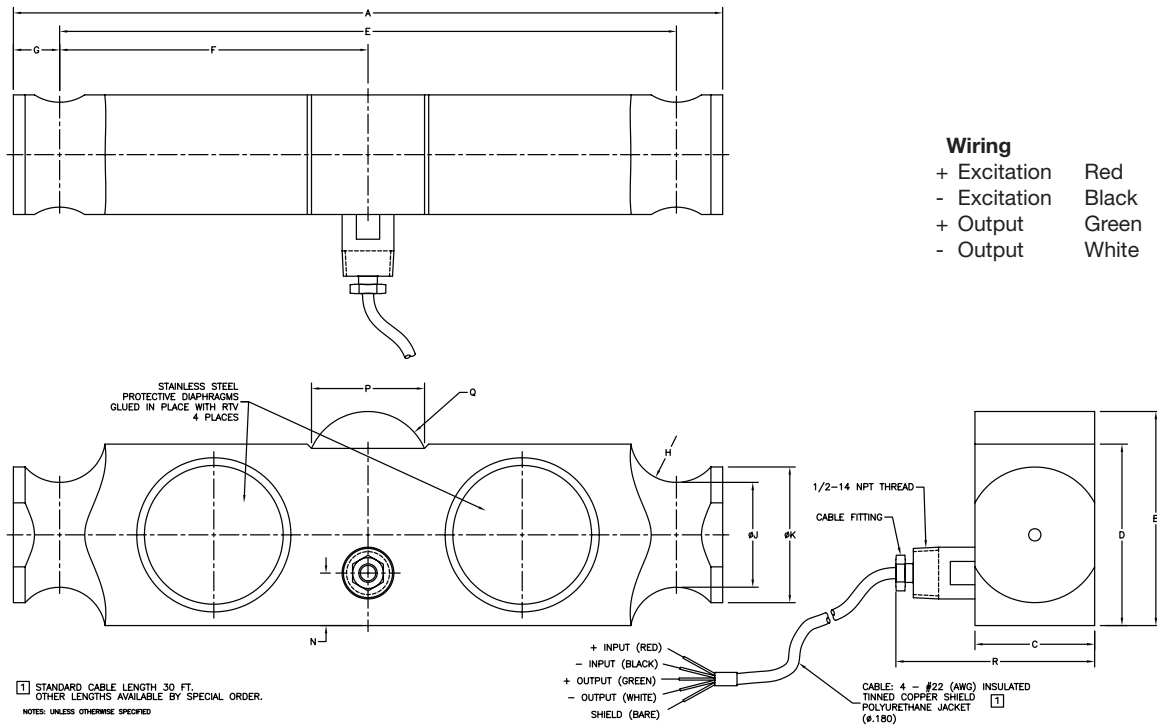
- Hopper/silo/tank weighing
- Weighbridges

DESCRIPTION

The Model 9903 is a double-ended beam-type load cell with a low profile design, specifically designed for applications where space is limited or special mounting required.



OUTLINE DIMENSIONS in millimeters



MODEL	CAPACITY	A	B	C	D	E	F	G	H	J	K	N	P	Q	R
Standard	50k, 60k, 75k, 100k	11.50	3.47	1.94	2.94	10.00	5.00	0.75	R.75	∅1.70	∅2.20	0.85	1.83	R1.00	3.22
Rat Proof															4.10

Capacities are in pounds.

Double-Ended Shear Beam Load Cell

SPECIFICATIONS			
PARAMETER	VALUE		UNIT
Standard Capacities	50k, 60k, 75k, 100k		lbs
Accuracy approval	NTEP		
Accuracy designation	A6	B10	
Accuracy class	IIIM	IIILM	
Certificate of conformance	00-050	00-050	
Maximum divisions, multipole cells	6000	10000	n_{max}
Minimum divisions size, single cell	0.0129	0.0043	v_{min}
Excitation voltage	10 nom, 15 max		VDC
Rated output	3 ±0.003		mV/V
Input resistance	700.0 ±7.0		Ω
Output resistance	700.0 ±7.0		Ω
Zero balance	1		±% FS
Insulation resistance at 50 VDC	≥5000		MΩ
Minimum dead load	0		% E_{max}
Maximum safe load limit	150		% E_{max}
Ultimate over load	300		% E_{max}
Safe side load limit	100		% E_{max}
Combined error	0.02		% FS
Non-linearity	0.02		% FS
Hysteresis	0.02		% FS
Non-repeatability	0.01		% FS
Zero return	0.0083	0.015	% load/30 min
Creep	0.025	0.03	% load/30 min
Temperature effect on output	0.08		% load/100°F
Temperature effect on zero	0.1		% FS/100°F
Compensated temperature range	-10 to +40 (+14 to +104)		°C (°F)
Operating temperature range	-53 to +93 (-65 to +200)		°C (°F)
Environmental protection	IP67		
Cable length	9 (30)		m (ft)
Cable type	4-wire shielded; shield is not connected to load cell body		
Element material	Stainless steel		

All specifications subject to change without notice.

Wiring color code:

- + Excitation Red
- Excitation Black
- + Output Green
- Output White