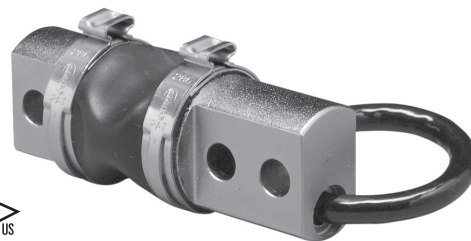


## Low Profile Bending Beam

### FEATURES

- Rated capacities of 25 to 500 pounds
- Tension or compression loading capabilities
- Compact, low profile design
- *Sensorgage*™ sealed to IP65 standards
- Factory Mutual System Approved for Classes I, II, III; Divisions 1 and 2; Groups A through G. Also, non-incendive ratings (without barriers)
- **Optional**
  - Companion tank weighing assemblies available (Model 65059-TWA)



### APPLICATIONS

- Bin and hopper weighing
- Belt conveyor scales
- Netweighing

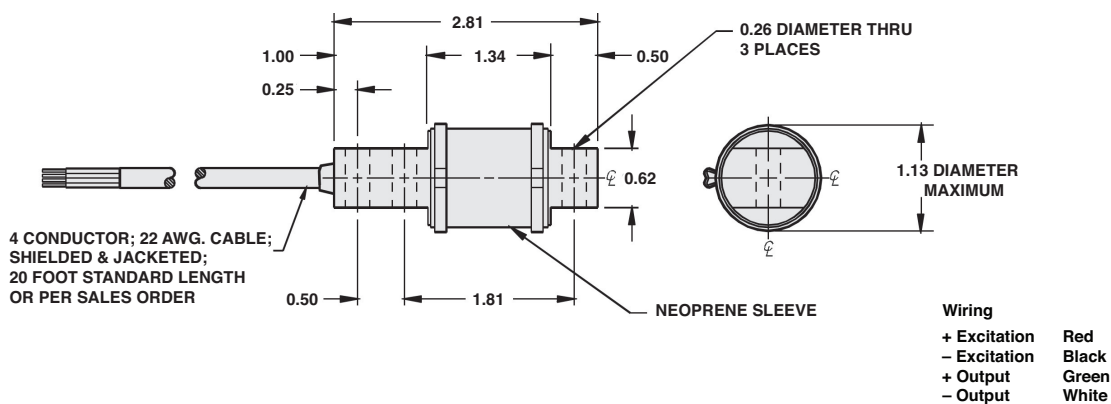
### DESCRIPTION

Model 60040 is a compact, low capacity, alloy-steel, high-precision bending-beam load cell.

The product's small size and accuracy makes it ideal for applications that demand high performance from a small package. This load cell is commonly used in platform scales, conveyor scales, and varied process weighing applications.

The product is rated intrinsically safe by the Factory Mutual System (FM); making it suitable for use in potentially explosive environments. A mounting accessory, Model 65059-TWA, is available for Model 60048.

### OUTLINE DIMENSIONS in inches



Low Profile Bending Beam

<b>SPECIFICATIONS</b>		
<b>PARAMETER</b>	<b>VALUE</b>	<b>UNIT</b>
Rated capacity—R.C. (E <sub>max</sub> )	25, 50, 100, 150, 250, 500	lbs
NTEP/OIML accuracy class	Standard	
Maximum no. of intervals (n)	–	
Rated output—R.O.	2.0	mV/V
Rated output tolerance	+0.25 to -10	±% mV/V
Zero balance	1.0	±% FSO
Combined error	0.03	±% FSO
Non-repeatability	0.01	±% FSO
Creep error (20 minutes)	0.03	±% FSO
Temperature effect on zero	0.0015	±% FSO/°F
Temperature effect on output	0.0008	±% of load/°F
Compensated temperature range	14 to 104 (-10 to 40)	°F (°C)
Operating temperature range	0 to 150 (-18 to 65)	°F (°C)
Storage temperature range	-60 to 185 (-50 to 85)	°F (°C)
Maximum safe central overload	150	% of R.C.
Ultimate central overload	300	% of R.C.
Excitation, recommended	10	VDC or VAC RMS
Excitation, maximum	15	VDC or VAC RMS
Input impedance	380–450	Ω
Output impedance	349–355	Ω
Insulation resistance at 50 VDC	>1000	MΩ
Material	Nickel-plated alloy steel	
Environmental protection	IP65	

FSO—Full Scale Output

All specifications subject to change without notice.

**CERTIFICATION MARKINGS**

FM Approval markings (USA and Canada)  
 IS Class I, II, III, Division 1, Groups A, B, C, D, E, F and G;  
 NI Class I, Division 2, Groups A, B, C, and D,  
 DIP, Class II, III, Division 2, Groups F and G;  
 T4;  
 Ta = -25°C to +66°C